



» Kapila »

*yellowish-brown coloured*

plot no. 10, sector 10, taloja, navi mumbai

# the specification

## living & bedrooms

2 x 2 vitrified flooring | gypsum finished walls in rooms

## kitchen

2 x 2 vitrified flooring | granite platform with stainless steel sink | tiles upto 2 feet height above platform

## bathrooms & toilets

concealed plumbing with hot & cold diverter arrangement of reputed make | good quality sanitary fittings of cera / jaquar or equivalent make | antiskid flooring | full height glazed tiles | geysers in bathroom

## doors & windows

decorative laminated solid flush doors for main door & bedroom doors | FRP / PVC doors for bathroom & toilet anodized aluminium sliding windows

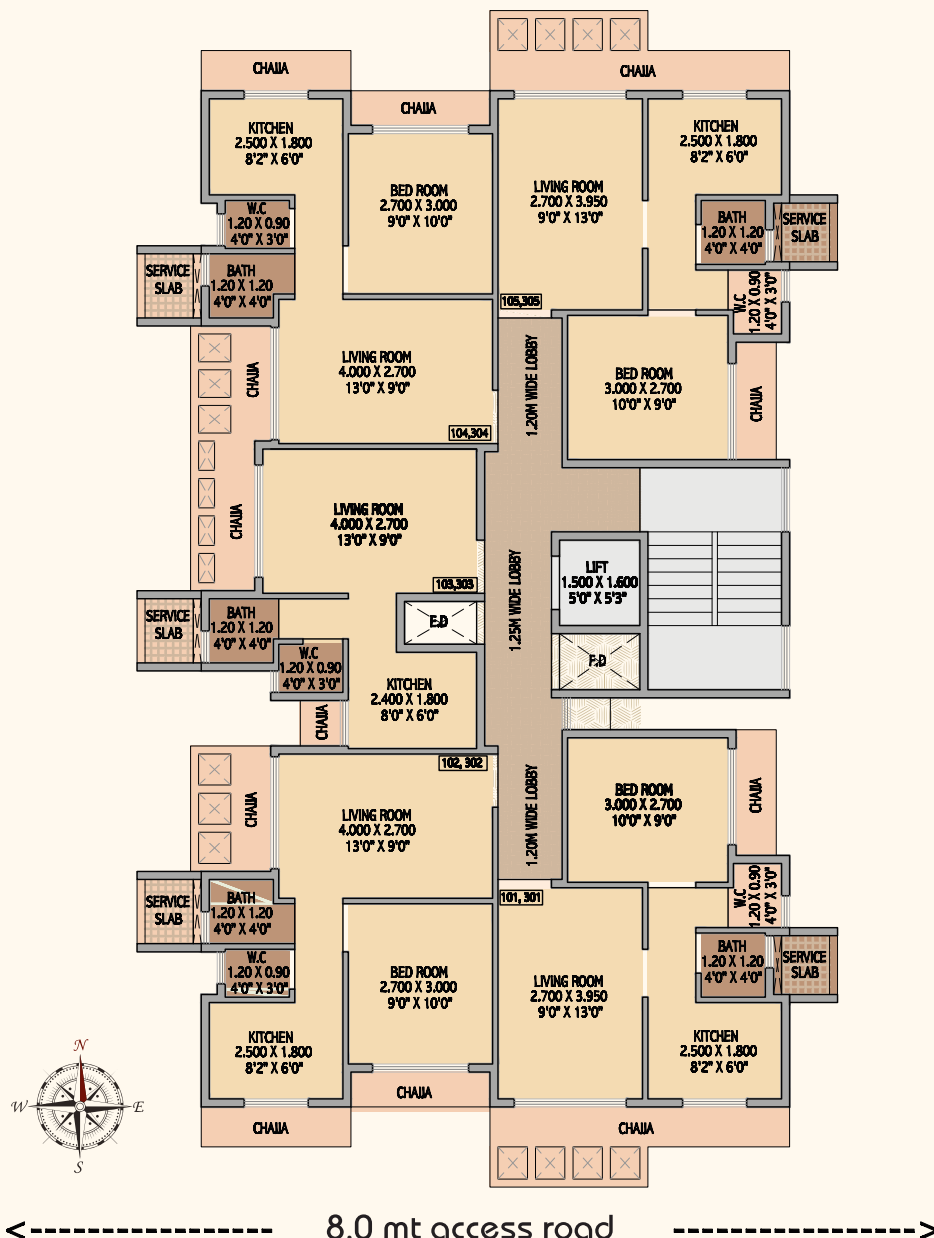
## electrical fittings

leGrand or equivalent make switch boards & switches | points for lighting, telephone, TV, aquaguard, refrigerator & exhaust fan will be provided | provision for internet connectivity at distribution board of flat

## painting

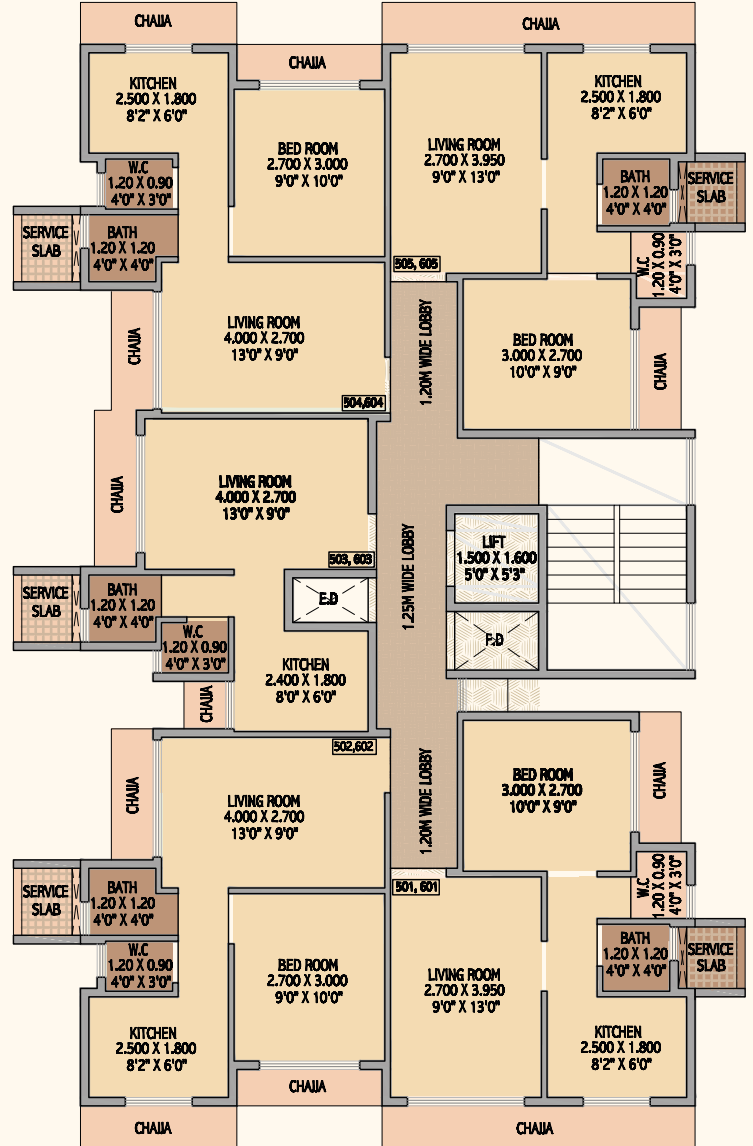
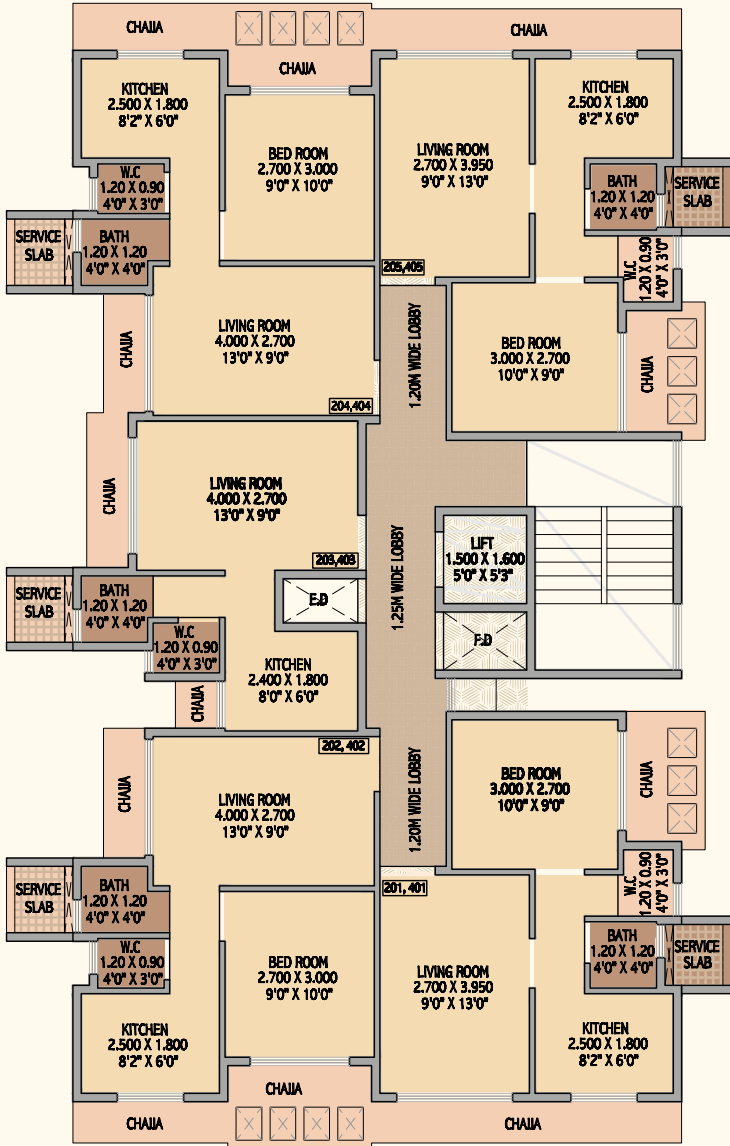
all internal walls with emulsion paint and external walls with acrylic paint

## 1<sup>st</sup> & 3<sup>rd</sup> floor plan



## 2<sup>nd</sup> & 4<sup>th</sup> floor plan

## 5<sup>th</sup> & 6<sup>th</sup> floor plan



←----- 8.0 mt access road ----->

## project features



clear title  
CIDCO plot



G+7 storied Building  
with 1 Rk & 1 Bhk flats



earthquake resistant  
RCC structure



CCTV surveillance for  
entrance lobby



sufficient underground  
& overhead tanks  
for water supply



timely possession  
& superior quality  
construction



intercom facility  
in all flats



elevator of  
reputed make



security cabin at  
the entrance gate



power backup facility  
for lift, staircase,  
water pumps  
& common area

# location map



## the location advantage

- 5 min. walking distance from taloja metro station
- 10 min. drive to mumbai-pune or mumbai-goia highway
- 10 min. drive to ISKCON temple
- 10 min. drive to central park and golf course
- 15 min. drive to proposed navi mumbai international airport
- excellent education and medical facilities in close proximity
- gardens, spacious playgrounds and schools nearby



project by :

**Sai Developers**

Maha RERA registration no.

**P52000017737**

[maharera.mahaonline.gov.in](http://maharera.mahaonline.gov.in)

architect : rajesh r.c.

rcc consultant : c.s.e. consultants

corporate office : S-23, ashiana, sector-17, vashi, navi mumbai - 400 703

[www.saidevelopersgroup.com](http://www.saidevelopersgroup.com) | email: [saideveloper@vsnl.net](mailto:saideveloper@vsnl.net)

booking contact : 022 2789 1805, 2789 1969, 2789 5134

**DISCLAIMER:** THE PREVIEWED IMAGES IN THE BROCHURE ARE INDICATIVE BASED ON THE CONSTRUCTION OF THE BUILDING AS IS PROPOSED AT PRESENT AND IT IS ISSUED IN GOOD FAITH SUBJECT TO THE APPROVAL OF THE AUTHORITIES OR IN THE INTEREST OF THE CONTINUING IMPROVEMENT AND DEVELOPMENT OF THE BUILDING. THE DEVELOPERS RESERVE THE RIGHT TO ALTER THE LAYOUT, PLANS, SPECIFICATIONS OR FEATURES WITHOUT PRIOR NOTICE OR OBLIGATION AS PER APPROVED PLAN. THE DETAILS AND IMAGES CONTAINED IN THE BROCHURE OR ANY OTHER PRINTED MATERIAL ARE ONLY INDICATIVE AND ARTISTIC IMAGINATION MAY NOT BE EXACT OR ACCURATE AND THE SAME DO NOT FORM EITHER THE BASIC OR PART OF THE OFFER OR CONTRACT OR AGREEMENT.